

A Tour of Newland Park

- a historical perspective
- a current overview
- future developments

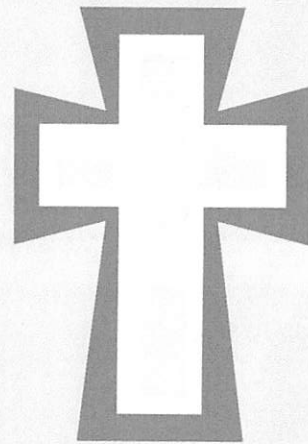
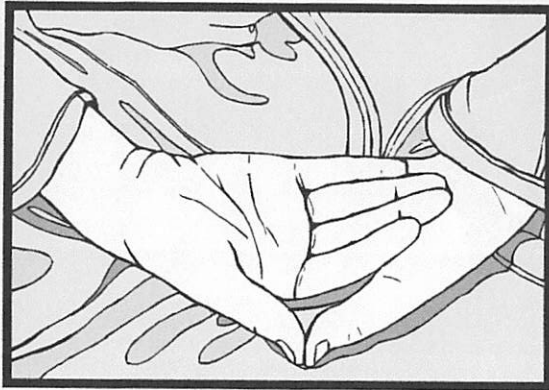
Iain Thomson
Head of Campus
Services



bove

health studies

In the Beginning



- **Early 1200s**
- **The Newlands Park Estate - part of**
- **Missenden Abbey**

bove

health studies

1772 - a new owner



- **Henry Gott bought Newland Park**
- **Added two wings to the Manor**
- **Extensive improvements to grounds**

bove

health studies

The Daily Mail - 10th July 1899



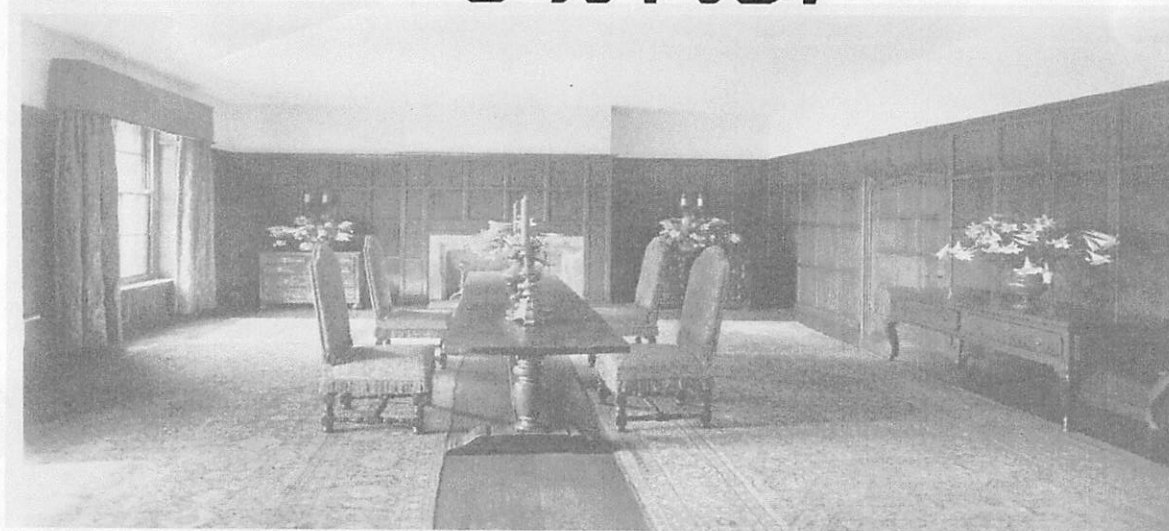
*Chalfont has a
Ghost!!*

GHOSTLY
COACH AND
FOUR GALLOPS
THROUGH
NEWLAND PARK

bove

health studies

1809 - 1903: *yet another owner*



- **Squire Thomas Allen bought Newland Park as a family house**

bowe

health studies

1903 - a hiding place



- The estate became a safe house for fleeing suffragettes

bove

health studies

1903 - 1922: a place of influence and Society

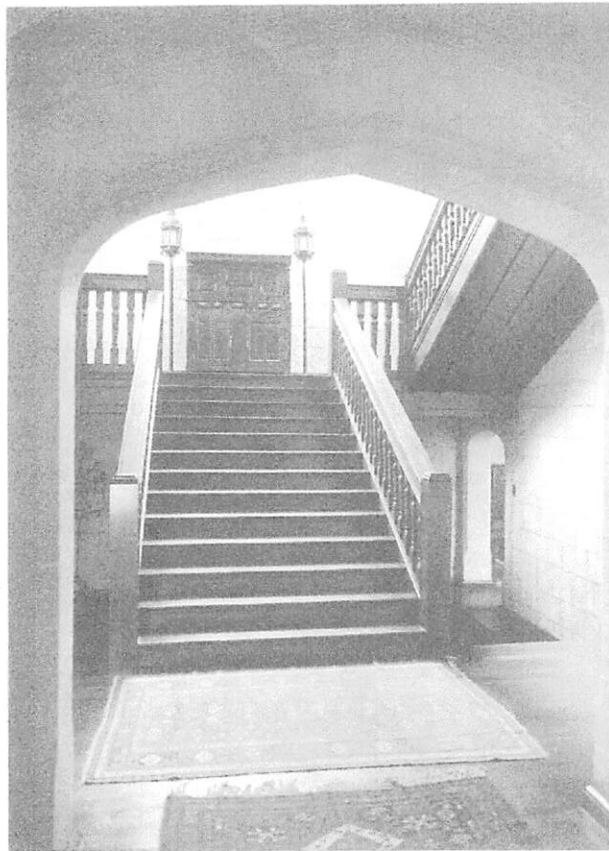


- **The Harben Family**
- **Guests include**
 - **Emmaline Pankhurst**
 - **George Bernard Shaw**
 - **H.G. Wells**

bove

health studies

After the First World War

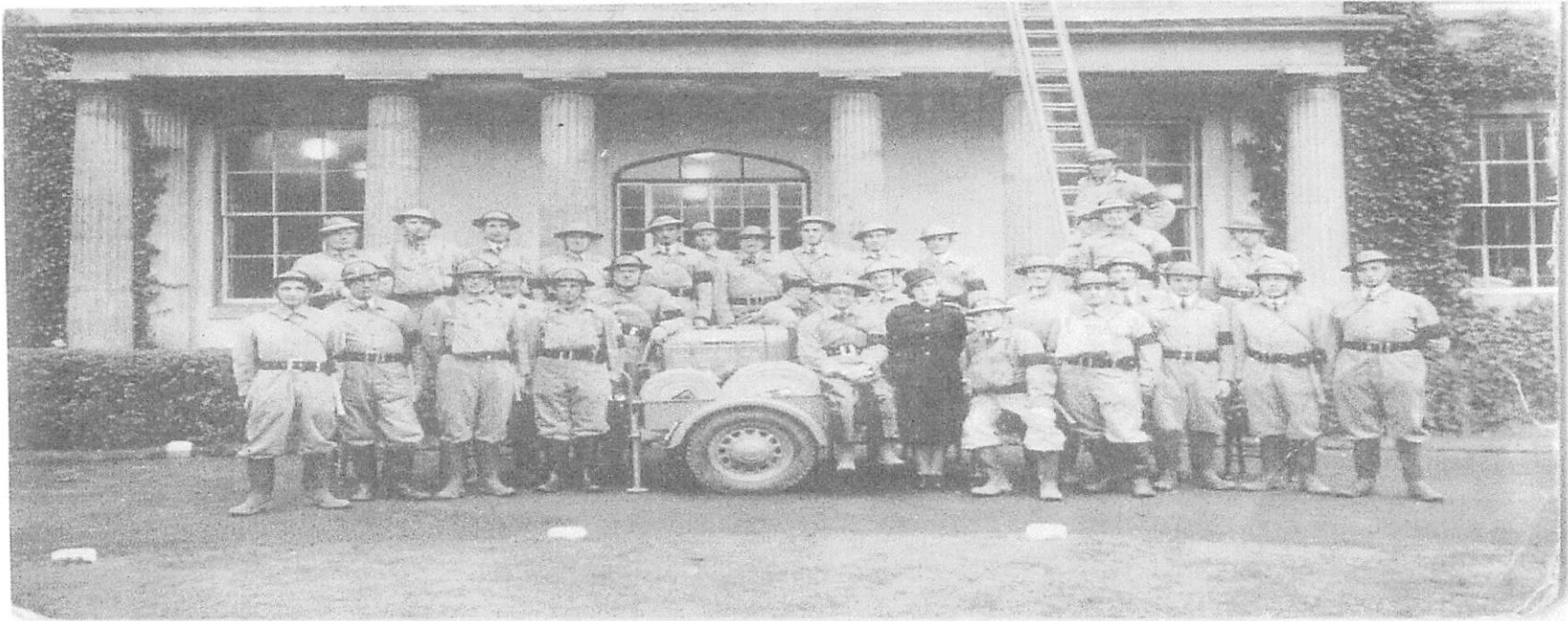


- **Thomas Hutchinson altered the interior of the Manor House considerably**
- **Replaced the stair case**
- **Changed the Georgian front door to Tudor style**
- **The Great Hall was lined with stone**
- **Wood panelling was stained dark**

bove

health studies

1941 - 1946



- **The North British and Mercantile Insurance Company used the site as an evacuation address**

bouc

health studies

1946 - *the introduction to Education*



- **Newland Park
Teacher Training
College**

bove

health studies

1975 - Higher Education Commences

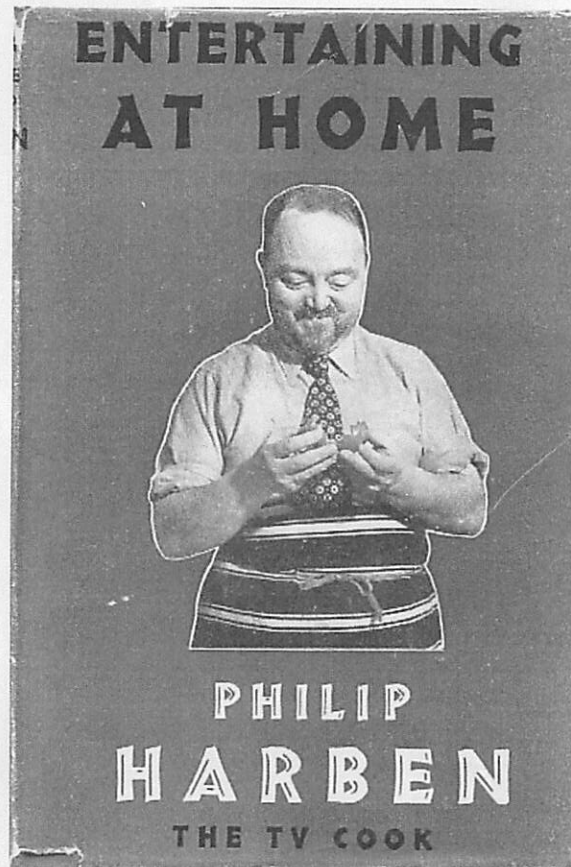


- **Buckinghamshire Chilterns University College become the new owners of Newland Park**

boue

health studies

Philip Harben - the first TV chef • Menu



- Hot Asparagus
- Hollandaise Sauce
- Iced Water
- Stewed Pigeon with Olives
 - Roast Potatoes
 - Peas
- Vintage Burgandy
- Rum and Lemon Souffle
 - Sauternes

bove

health studies



bove

health studies